



# Square Tube (1") Pontoon Bimini Top Assembly and Installation Instructions

## How to Prolong the Life of Your Bimini Top

- Avoid letting water or snow stand on the top.
- Always travel with top in the stored position inside the storage boot.
- When properly installed, you can safely deploy and use your bimini top with a maximum operating speed of 35 MPH.
- Allow bimini top to dry thoroughly before folding for storage.

## Cleaning & Care Instructions

Scan QR Code or visit Page 12 to learn how to properly care for your bimini top canvas and frame.



## Carver Limited Warranty

Scan QR Code or visit Page 12 to learn more about our limited product warranty.



Carver 1" Square Tube Pontoon Bimini Tops are a classy way to protect yourself and your pontoon boat from the elements. They also add style and color to your boat. These instructions make assembly and installation easy. **Please read them carefully before beginning.**



Please take extra care when unpacking and installing your bimini top. Should you need to return the bimini top, it **MUST** be in its original, new condition. The bimini top canvas must be clean and dry, and free of debris (including pet hair). Frame components must not be scratched.

**Important:** Make sure all parts are included in your bimini top package. The quantities listed below are the quantities of parts needed based on the size of the top that was ordered. You may receive additional parts that are not needed for your particular size of bimini top.

**Note:** Be sure bimini top dimensions match the mounting locations on your boat before assembling the bimini top and before drilling holes in your boat.

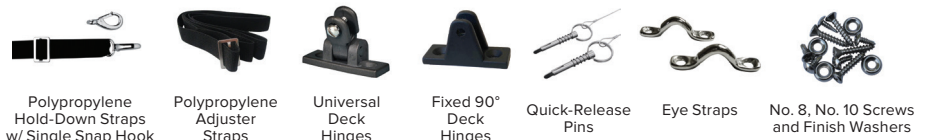
### PARTS LIST:

### QUANTITIES FOR:

Item	4-Bow Square Tube Standard 8', 9', 10' Complete Top	4-Bow Square Tube Buggy Style 8' Complete Top	4-Bow Square Tube Free Standing Style 8' Complete Top	Square Tube Dual Pontoon 16' Complete Top
No. 8 Screws - 1/2" Length	20	20	20	30
No. 10 Screws - 1" Length	12	12	8	20
Finish Washers	2	2	0	2
Screw Studs (Buggy Style Tops only)	0	6	0	0
Long, Metal Side Bow Sections	2	2	2	2+2
Medium, Metal Side Bow Sections	2	2	2	2+2
Short, Metal Side Bow Sections	4	4	4	4
Center Metal Cross Bow Sections (equal length)	4	4	4	4+2
Horizontal Brace (pair - Free Standing Tops only)	0	0	2	0
Black, 1" Polypropylene Hold-Down Straps	2	2	0	2
Black, 1" Polypropylene Adjuster Straps (packaged with canvas - *excluded for canvases w/ light cut-out and w/ zippered sleeves)	4*	4*	4*	0
Bimini Top Canvas	1	1	1	1+1
Universal Deck Hinges	2	2	2	2+2
Eye Straps (excludes 10'L tops)	2	2	0	2
Matching Storage Boot	1	1	1	1+1
Brace Kit w/ Fixed 90° Deck Hinges (pair - *10'L x 2)	1*	1	1	1+1
Quick-Release Pins w/ Lanyard (pair - 10'L x 2)	1	1	3	1+1

**Minimum Tools Needed:** Drill with 9/64" bit, a Phillips head and a flat head screwdriver, pencil and 4mm or 1/8" Hex Bit Allen Wrench.

**Also helpful:** Tape measure or other measuring device.



Short, Medium and Long Metal Side Bow Sections

Center Metal Cross Bow Section

For fully assembled bimini top installation instructions, please see Page 8.

Instruction/Informational Sheet	Page
4-Bow Square Tube Complete Tops (Standard 8', 9', 10') w/o Light Cut-Out and w/o Zippered Sleeves	2
4-Bow Square Tube Complete Tops (Standard 8', 9', 10') w/ Light Cut-Out and w/ Zippered Sleeves	3
4-Bow Square Tube Complete Tops (Free Standing Style) w/o Light Cut-Out and w/o Zippered Sleeves	4
4-Bow Square Tube Complete Tops (Free Standing Style) w/ Light Cut-Out and w/ Zippered Sleeves	5
Square Tube Dual Pontoon Complete Tops	6-7
Bimini Top Installation Instructions	8
Buggy Style (Supplemental Instructions)	9
Square Tube Replacement Canvas Installation	9
Bimini Top Brace Kit Instructions	10
Bimini Top Accessories	11
Bimini Top Cleaning & Care Instructions	12
Bimini Top Limited Warranty Information	12

These instructions show how to assemble the top, with its frame and straps, starting upside down and inverting to an upright position when attaching to your boat.

If you purchased a 1" 4-Bow Square Tube Pontoon Top WITH zippered sleeves and a light cut-out, please see Page 3.

1. Identify the hook shaped long, medium, and short metal side bow sections. Using the long side bow sections, and one of the center cross bow sections, assemble the side bows and center bow parts as shown, aligning the pre-drilled holes. Use the 1/2", no. 8 screws to connect the bow parts securely.

Repeat this procedure for the medium and short bows, aligning the pre-drilled holes and securing them with 1/2", no. 8 screws.

**Caution:** If screw heads become burred, cover heads with duct tape or file down screw heads to avoid damage to canvas.

2. Spread the bimini top canvas out on a flat, clean area with the bottom side up. Sewn-in label indicates the bottom, or inside, and the back of the top.

3. With the bows assembled, insert the medium bow assembly through the sleeve at the front of top. (This is the sleeve opposite the end with the sewn-in tag.) Note the position of the single pre-drilled holes on the bow frame. (Holes should be facing toward the middle of the canvas.) Insert the short bow assemblies through the small sleeves in the center of the top and the long bow assembly through the sleeve at the back of the top (nearest the sewn-in tag). Again, note the position of the single pre-drilled holes on the long bow frame. (Holes should be facing toward the middle of the canvas.)

4. Pass the buckled end of the adjuster strap through the opening in the fabric sleeve first (over and under the long bow) so that the strap orientation resembles the image enlargement (4A). The buckled end will be closest to the canvas.

Thread the **sewn** looped strap end through the buckle (see Image 4B).

Next, pass the **sewn** looped strap end over the end of the **short** bow and slide it down into position directly across from the opening in the fabric where the buckled end is attached (see illustration 4C).

**Leave the straps at maximum length for now.** Repeat this step for the second strap then assemble the straps for the front bow. See enlargement 4D. The straps will be tightened only AFTER the top is fully installed on the boat (see Installation Instructions Step 7 on Page 8).

5. (Skip this step for 10'L tops). Pass looped end of each hold-down strap over each end of the medium bow. Be sure adjuster buckle is facing out. Use a No. 8, 1/2" screw and one finish washer to fasten the strap to the bow at the pre-drilled hole (as shown in figures 5A & 5B). Position strap over hole and insert screw, with finish washer, through center of strap and into pre-drilled hole.

6. Connect short frame ends to jaw slides on each side of long bow frame. Repeat for medium bow as shown. Jaw slides should allow bows to pivot, but be tight enough to hold securely.

7. Mount the brace kit by connecting the eye ends to the remaining jaw slides on the long bow (as shown in figure 7). Note: The braces are pre-fitted with fixed 90° deck hinges on the opposite ends for mounting to the rails on the boat. For 10'L tops - repeat this step on the medium bow.

See Page 8 for installation instructions for mounting the bimini top onto your boat.

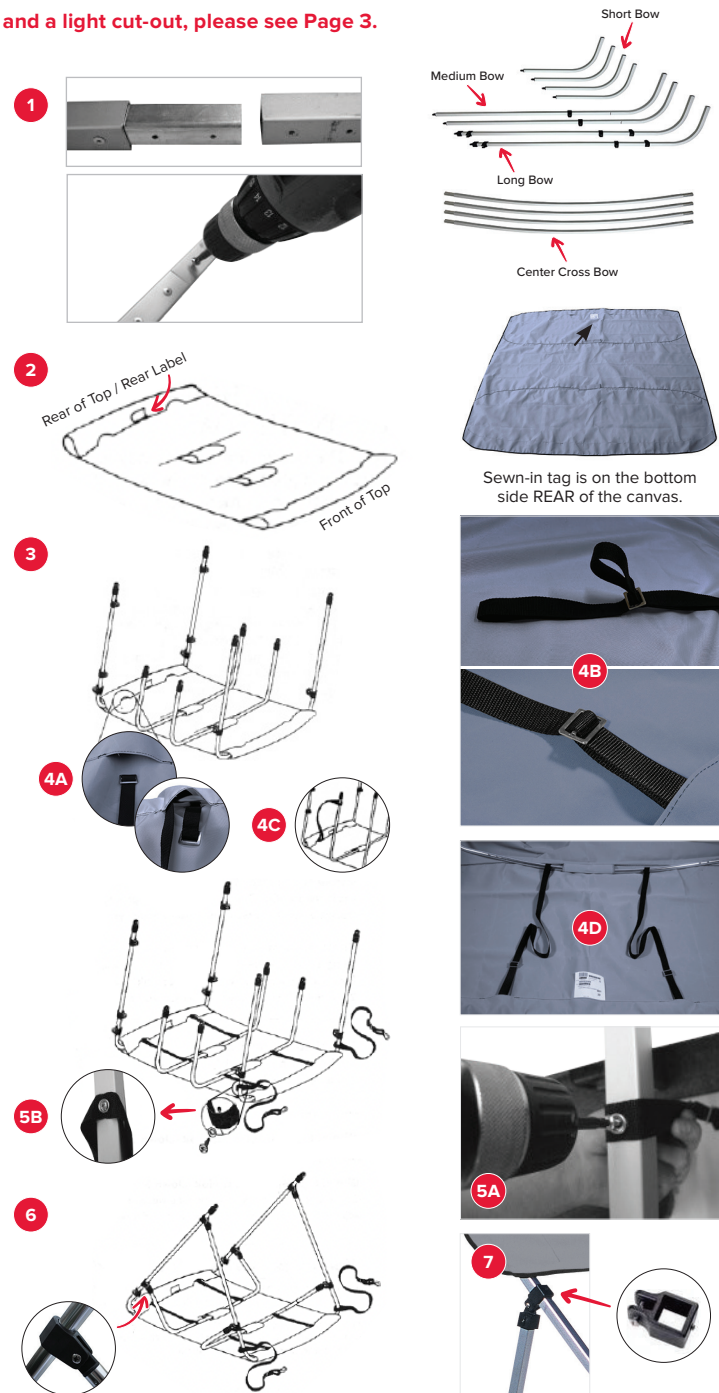
Additional brace kit information can be found on Page 10.



Scan QR Code to watch our online assembly video.



Supplemental Buggy Style Tops - See Page 9 Free Standing Tops - See Page 4



### Adjuster Strap Installation

Assembly Video

1. Pass the buckled end of the adjuster strap through opening in fabric and around long bow.

2. Thread looped end through buckle.

3. Pass the looped end of the strap over the short bow and slide down into position.

These instructions show how to assemble the top, with its frame and straps, starting upside down and inverting to an upright position when attaching to your boat.

1. Identify the hook shaped, long, medium, and short metal side bow sections. Using the long side bow sections, and one of the center cross bow sections, assemble the side bows and center bow parts as shown, aligning the pre-drilled holes. Use the 1/2", no. 8 screws to connect the bow parts securely.

*Caution: If screw heads become burred, cover heads with duct tape or file down screw heads to avoid damage to canvas.*

2. (Skip this step for 10'L tops). Pass looped end of each hold-down strap over each end of the medium bow. Be sure adjuster buckle is facing out. Use a No. 8, 1/2" screw and one finish washer to fasten the strap to the bow at the pre-drilled hole (as shown in figures 2A & 2B). Position strap over hole and insert screw, with finish washer, through center of strap and into pre-drilled hole.

3. Connect short frame ends to jaw slides on each side of long bow frame. Repeat for medium bow as shown. Jaw slides should allow bows to pivot, but be tight enough to hold securely.

4. Mount the brace kit by connecting the eye ends to the remaining jaw slides on the long bow (as shown in figure 4). Note: The braces are pre-fitted with fixed 90° deck hinges on the opposite ends for mounting to the rails on the boat. For 10'L tops - repeat this step on the medium bow.

5. Spread the bimini top canvas out on a clean, flat surface with the bottom side up. The sewn-in label is located on the bottom (or inside) REAR of the canvas (as shown in figures 5A/5B). Unzip the sleeve zippers.

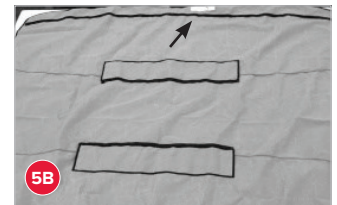
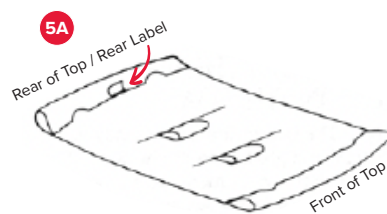
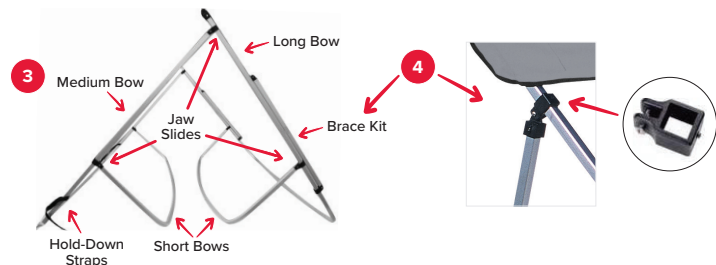
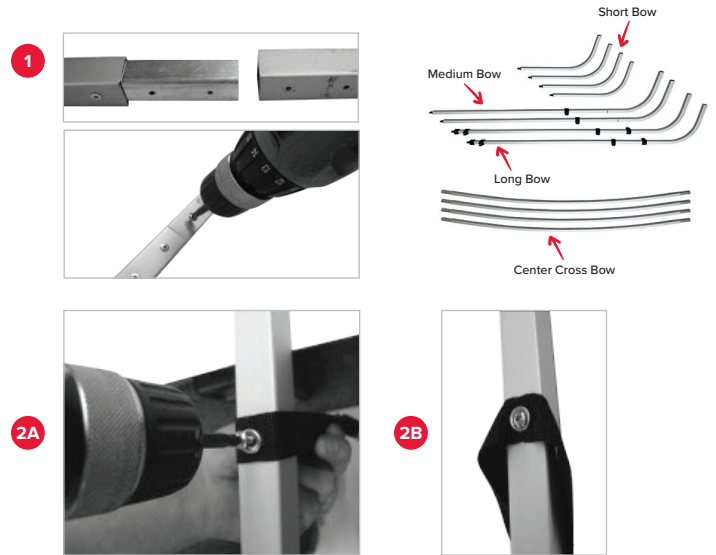
6. Take the assembled frame and lay it on top of the canvas with the long bow to the rear (at the sewn-in label). Fasten the zippers on the sleeves (long, medium and short bows of the frame) as shown in figure You are now ready to flip the bimini top right-side up and mount to the boat.

See Page 8 for installation instructions for mounting the bimini top onto your boat.

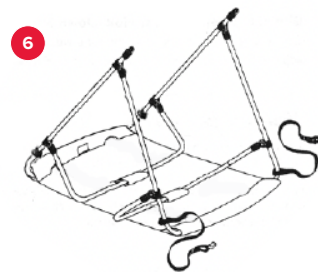
Additional brace kit information can be found on Page 10.



Scan QR Code  
to watch our online  
assembly video.



Sewn-in tag is on the bottom side REAR of the canvas.







# Square Tube (1") Pontoon Bimini Top - Free Standing Style (w/o Light Cut-Out and w/o Zippered Sleeves) Assembly Instructions

These instructions show how to assemble the top, with its frame and straps, starting upside down and inverting to an upright position when attaching to your boat.

If you purchased a 1" 4-Bow Square Tube Free Standing Style Pontoon Top WITH zippered sleeves and a light cut-out, please see Page 5.

1. Identify the hook shaped, long, medium, and short metal side bow sections. Using the long side bow sections, and one of the center cross bow sections, assemble the side bow and center bow parts as shown, aligning the pre-drilled holes. Use the 1/2", no. 8 screws to connect the bow parts securely.

Repeat this procedure for the medium and short bows, aligning the pre-drilled holes and securing them with 1/2", no. 8 screws.

**Caution: If screw heads become burred, cover heads with duct tape or file down screw heads to avoid damage to canvas.**

2. Spread the bimini top canvas out on a flat, clean area with the bottom side up. Sewn-in label indicates the bottom, or inside, and the back of the top.

3. With the bows assembled, insert the medium bow assembly through the sleeve at the front of top. (This is the sleeve opposite the end with the sewn-in tag.) Note the position of the single pre-drilled holes on the bow frame. (Holes should be facing toward the middle of the canvas.) Insert the short bow assemblies through the small sleeves in the center of the top and the long bow assembly through the sleeve at the back of the top (nearest the sewn-in tag). Again, note the position of the single pre-drilled holes on the long bow frame. (Holes should be facing toward the middle of the canvas.)

4. Pass the buckled end of the adjuster strap through the opening in the fabric sleeve first (over and under the long bow) so that the strap orientation resembles the image enlargement (4A). The buckled end will be closest to the canvas.

Thread the **sewn** looped strap end through the buckle (see Image 4B).

Next, pass the **sewn** looped strap end over the end of the **short** bow and slide it down into position directly across from the opening in the fabric where the buckled end is attached (see illustration 4C).

**Leave the straps at maximum length for now.** Repeat this step for the second strap then assemble the straps for the front bow. See enlargement 4D. The straps will be tightened only AFTER the top is fully installed on the boat (see Installation Instructions Step 7 on Page 8).

5. Pass looped end of each hold-down strap over each end of the medium bow. Be sure adjuster buckle is facing out. Use a No. 8, 1/2" screw and one finish washer to fasten the strap to the bow at the pre-drilled hole (as shown in figures 5A & 5B). Position strap over hole and insert screw, with finish washer, through center of strap and into pre-drilled hole.

6. Connect short frame ends to jaw slides on each side of long bow frame. Repeat for medium bow as shown. Jaw slides should allow bows to pivot, but be tight enough to hold securely.

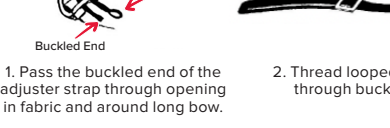
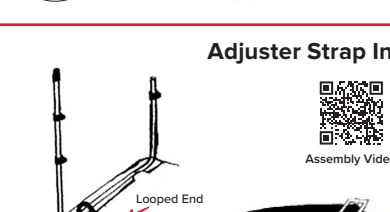
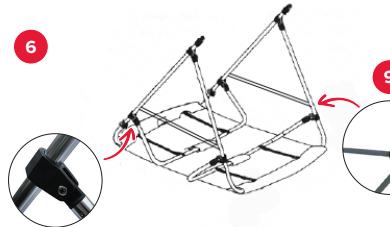
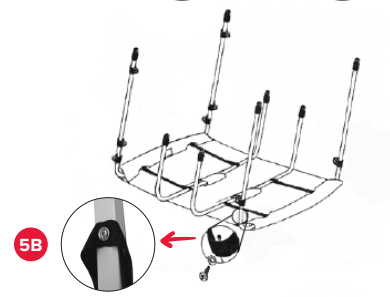
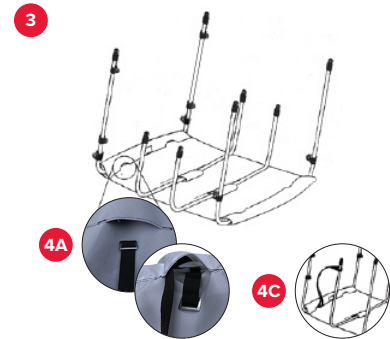
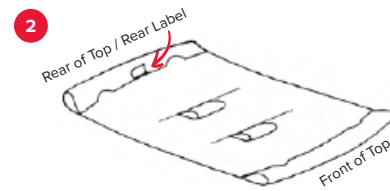
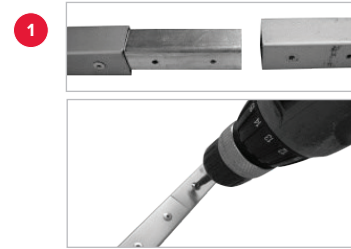
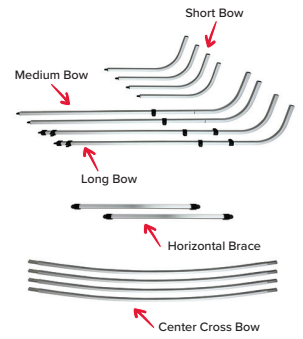
7. Mount the brace kit by connecting the eye ends to the remaining jaw slides on the long bow (as shown in figure 7). Note: The braces are pre-fitted with fixed 90° deck hinges on the opposite ends for mounting to the rails on the boat.

8. The long bow has a pre-installed jaw slide to mount the rear brace kit. The recommended mounting location of the braces is 47" aft of the main deck hinge.

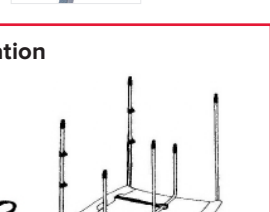
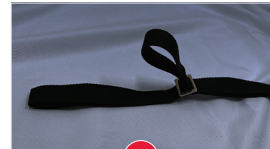
9. To install the front horizontal brace, slide the pre-installed jaw slides up to rest against the short bows and secure with quick-release pins (w/o lanyards). Do not tighten. Insert the braces into the jaw slides and slide the jaw slides down approximately 2 1/2" until firmly set, then tighten set screws using a 4mm or 1/8" Hex Bit Allen Wrench. See figure 9.

See Page 8 for installation instructions for mounting the bimini top onto your boat.

Additional brace kit information can be found on Page 10.



Sewn-in tag is on the bottom side REAR of the canvas.



### Adjuster Strap Installation



Assembly Video

1. Pass the buckled end of the adjuster strap through opening in fabric and around long bow.
2. Thread looped end through buckle.
3. Pass the looped end of the strap over the short bow and slide down into position.



Scan QR Code to watch our online assembly video.





# Square Tube (1") Pontoon Bimini Top - Free Standing Style (w/ Light Cut-Out and w/ Zippered Sleeves) Assembly Instructions

These instructions show how to assemble the top, with its frame and straps, starting upside down and inverting to an upright position when attaching to your boat.

1. Identify the hook shaped, long, medium, and short metal side bow sections. Using the long side bow sections, and one of the center cross bow sections, assemble the side bow and center bow parts as shown, aligning the pre-drilled holes. Use the 1/2", no. 8 screws to connect the bow parts securely.

**Caution:** If screw heads become burred, cover heads with duct tape or file down screw heads to avoid damage to canvas.

2. Pass looped end of each hold-down strap over each end of the medium bow. Be sure adjuster buckle is facing out. Use a No. 8, 1/2" screw and one finish washer to fasten the strap to the bow at the pre-drilled hole (as shown in figures 2A & 2B). Position strap over hole and insert screw, with finish washer, through center of strap and into pre-drilled hole.

3. Connect short frame ends to jaw slides on each side of long bow frame. Repeat for medium bow as shown. Jaw slides should allow bows to pivot, but be tight enough to hold securely.

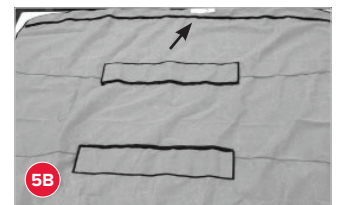
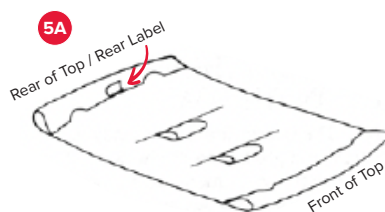
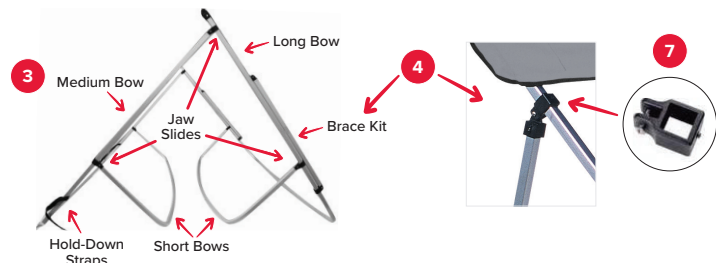
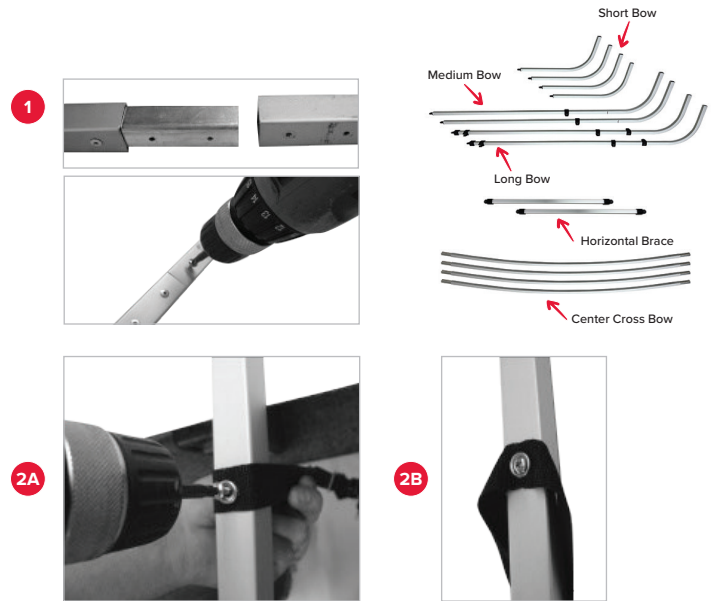
4. Mount the brace kit by connecting the eye ends to the remaining jaw slides on the long bow (as shown in figure 4). Note: The braces are pre-fitted with fixed 90° deck hinges on the opposite ends for mounting to the rails on the boat.

5. Spread the bimini top canvas out on a clean, flat surface with the bottom side up. The sewn-in label is located on the bottom (or inside) REAR of the canvas (as shown in figures 5A/5B). Unzip the sleeve zippers.

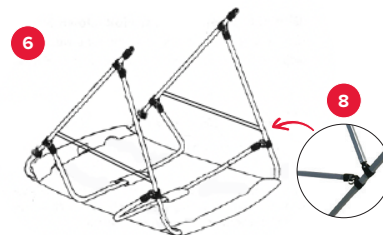
6. Take the assembled frame and lay it on top of the canvas with the long bow to the rear (at the sewn-in label). Fasten the zippers on the sleeves (long, medium and short bows of the frame) as shown in figure You are now ready to flip the bimini top right-side up and mount to the boat.

7. The long bow has a pre-installed jaw slide to mount the rear brace kit. The recommended mounting location of the braces is 47" aft of the main deck hinge.

8. To install the front horizontal brace, slide the pre-installed jaw slides up to rest against the short bows and secure with quick-release pins (w/o lanyards). Do not tighten. Insert the braces into the jaw slides and slide the jaw slides down approximately 2 1/2" until firmly set, then tighten set screws using a 4mm or 1/8" Hex Bit Allen Wrench. See figure 8.



Sewn-in tag is on the bottom side REAR of the canvas.



See Page 8 for installation instructions for mounting the bimini top onto your boat.

Additional brace kit information can be found on Page 10.



Scan QR Code to watch our online assembly video.





Please take extra care when unpacking and assembling your bimini top. Should you need to return the bimini top, it **MUST** be in its original, new condition. The bimini top canvas must be clean and dry, and free of debris (including pet hair). Frame components must not be scratched.

**IMPORTANT:** Bimini top is packed in 2 boxes secured together for shipping. Main box (heavier box) contains components for the main, 4-bow section of the bimini top and all assembly and mounting hardware. Secondary box (lighter box) contains components for the 2-bow bimini top extension. Complete Bimini Top will provide 16-feet of coverage and is intended for boats 22-feet and larger with a rail variance of less than 6" to properly connect forward and rear tops.

Before beginning, please make sure all parts listed below are included in your **main Bimini Top package:**

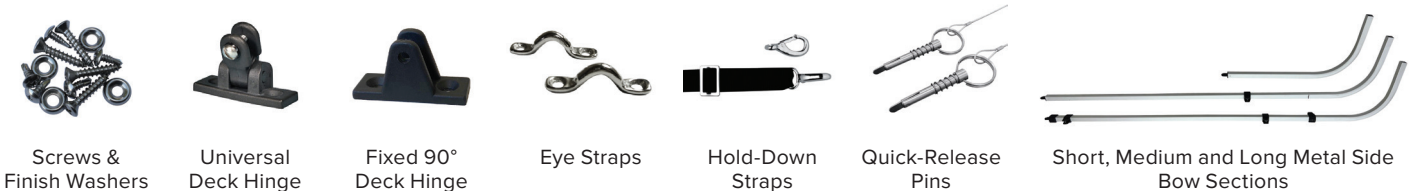
No. 8 x 1/2" Screws	30	Black 1" Polypropylene Hold-Down Straps	2
No. 10 x 1" Screws	20	Long, Metal Side Bow Sections with Braces	2
Finish Washers	2	Medium, Metal Side Bow Sections	2
Universal Deck Hinges	4	Short, Metal Side Bow Sections	4
Fixed 90° Deck Hinges Drilled for Quick-Release Pin	4	Center, Metal Cross Bow Sections	4
Quick-Release Pin with Lanyard and Eye	4	Bimini Top Canvas with Storage Boot	1
Eye Straps	2	Rivets*	2

\*Refer to bottom of Page 7 for Usage Instructions

Before beginning, please make sure all parts listed below are included in your **secondary Bimini Top package:**

Long, Metal Side Bow Sections (with Pre-Installed Braces)	2	Center, Metal Cross Bow Sections	2
Medium, Metal Side Bow Sections	2	Bimini Top Canvas with Storage Boot	1

**Minimum Tools Needed:** Drill with 9/64" bit, a Phillips head and a flat head screwdriver, pencil, tape measure.



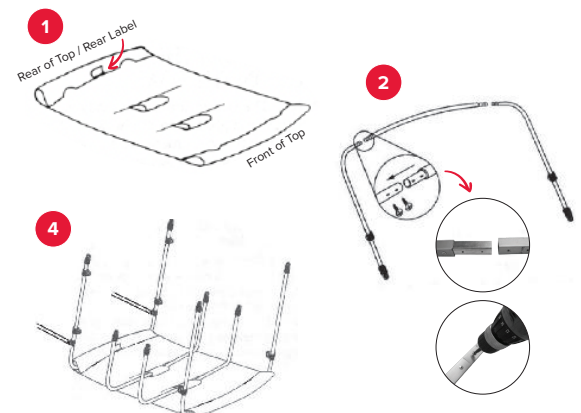
NOTE: Long Bow Sections have pre-installed braces attached.

**Begin assembly with the main 4-bow bimini top.** These instructions show how to assemble the top, with its frame and straps, starting upside-down and inverting to an upright position when attaching to your boat.

1. Spread the bimini top canvas out on a flat, clean area with the bottom side up. Sewn-in label indicates the bottom, or inside, and the back (rear) of the top.
2. Identify the hook-shaped long, medium and short bow side frame sections. Using the long side bow sections and one of the center cross bow sections, assemble as shown by aligning the pre-drilled holes. Use the 1/2" No. 8 screws to connect the bow sections securely.
3. Repeat this procedure for the medium and short bows, aligning the pre-drilled holes and securing them with the 1/2" No. 8 screws.

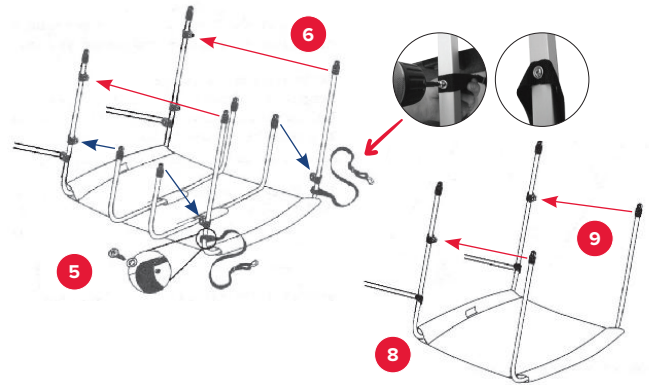
**Caution:** If the screw heads become burred, file down the screw heads to avoid damage to canvas.

4. With bows assembled, first insert the MEDIUM bow into the FRONT sleeve (this is the sleeve opposite the end with the sewn-in label). Note the position of the jaw slides and the single pre-drilled holes on the bow frame. The pre-drilled holes should be facing in. Pass the two short bows through the two small sleeves in the center of the canvas. Insert the long bow in the back (rear) sleeve so that the pre-attached braces swing outward to the back (rear).





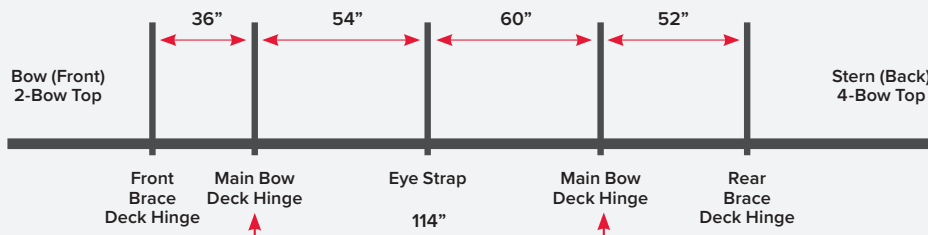
- Pass the looped end of each hold-down strap over each end of the medium (front) bow. Use a 1/2" No. 8 screw to fasten strap to bow frame at each pre-drilled hole position as shown. Position strap over hole and insert screw, with finish washer, through center of strap and into pre-drilled hole.
- Connect medium bow frame ends to the jaw slides closest to the ends of the long bow frame. Next, connect short frame ends to the second set of jaw slides on the long bow frame. Last, connect the other short frame ends to the jaw slides on the medium bow frame. NOTE: Jaw slides should allow short bows to pivot, but be tight enough to hold securely.
- Proceed to the parts in the secondary box. Spread the bimini top canvas on a flat, clean area with the bottom side up. The sewn-in label indicates the bottom, or inside, and the front of the top that will face the bow of the boat. Refer to Steps 2 and 3 to assemble the long and medium bows.
- With bows assembled, first insert the long bow into the front sleeve (the sleeve nearest the sewn-in label), making sure the pre-installed braces are facing forward/outward. Next, insert the medium bow into the rear sleeve.
- Connect medium bow frame ends to the jaw slides on the long bow. You are now ready to mount the bimini tops on the boat.



## Installing the Bimini Tops on the Boat



The following diagram is important to help you mount the bimini tops in the most desirable and functional position. All measurements provided are on-center of all deck hinges and eye straps. Pencil all locations before attempting installation so that changes can be made if desired. Since the locations of side gates can vary by boat brand and model, adjustments may be necessary to avoid side gates when mounting the bimini tops.



The main (long) bow of each bimini top must be mounted 114" apart or the two bimini tops will not properly join.

- Begin with the main 4-bow bimini top. Invert the top to the upright position. This is easier with two (or more) people, one to hold the top in place and the other to mark the positions of the deck hinges to be attached to the rails of the boat. Measure the marked positions of the hinges carefully being sure to follow the chart above especially for the distance between the main bow of each top. The main bows must be 114" apart on-center to ensure that the two tops will join properly. Also, take care to check that the markings for the hinges are exactly opposite each other on port and starboard sides. If hinges are not aligned properly, the top may become warped or damaged and unstable while in use, or look unbalanced.
- Use a drill with a 9/64" bit to drill the pilot holes for the universal deck hinges. Secure the deck hinges with 1" No. 10 screws. Mount the main bow to the universal deck hinges by removing the screw, inserting the eye end, and replacing the screw securely in the universal deck hinges.
- Repeat Steps 1 and 2 to attach eye straps to rails. With the top in the desired upright position, adjust each hold-down strap to a length that will attach **tightly** to the eye straps. Attach straps to eye straps with the snap hook at the end of each strap. Adjust straps to tighten further if necessary. It is important that straps are very tight.
- Retrieve the quick-release pins from the hardware pack. Place the eye (loop) at the end of the cable underneath the screw hole of each fixed 90° deck hinge for the rear braces. Repeat Steps 1 and 2 to secure the fixed 90° deck hinges, being sure the screw passes through the eye. This will prevent the quick-release pins from getting lost. Secure the rear braces to the deck hinges with the quick-release pins.
- Mount the 2-bow bimini top. Repeat Steps 1 and 2 to attach the universal deck hinges and mount the main bow.
- Zip the two canvases together. **IMPORTANT:** DO NOT ATTEMPT TO MOUNT THE FRONT BRACES WITHOUT FIRST ZIPPING THE CANVASES TOGETHER. This could result in difficulty or inability to get the canvases to join.
- Mount the front braces by repeating Step 4. NOTE: In some cases it may be desirable to reduce the length of the front braces to achieve a tighter-fitting front canvas. Aluminum braces may be cut down with a hacksaw. Two spare rivets are included for this application.

**CAUTION:** Always fold down and secure bimini tops in the stored position when trailering your boat and when not in use.

**PLEASE NOTE:** The process of assembling the bimini frame may cause the width of the frame to expand or retract at the mounting points. If the frame appears too wide or too narrow when you are ready to mount the top on the boat, simply mount one side and, with minimal force, push or pull the opposite side to fit the mounting point on the opposite side.

1. The bimini top is now ready to be inverted and positioned on the boat. This is easier with two or more people, one to hold the top in place while another marks the positions of the deck hinges to be attached to the rails of the boat.
2. Measure the marked position of the universal deck hinges for the main bow (long bow) carefully to make sure they are exactly opposite each other. If not aligned properly, the top may become warped or damaged and unstable while in use, or look unbalanced. Next, measure the marked positions for the fixed 90° deck hinges for the rear braces. These deck hinges should be located so that the braces attach to the boat rails at approximately 45° to 60° angles.
3. Use a drill with a 9/64" bit to drill the pilot holes for the two universal and two fixed 90° deck hinges. Secure the two universal deck hinges with the No. 10 x 1" sheet metal screws provided. Retrieve the fixed 90° deck hinges and the quick-release pins w/ lanyards from the hardware pack. Place the eye (loop) end of the lanyard underneath the screw hole on each of the fixed 90° deck hinges for the brace kit and secure with the No. 10 x 1" sheet metal screws provided, being sure the screw passes through the eye/loop end. This will prevent the quick-release pins from getting lost.
4. Place the top on the boat. Mount the main (long) bow to the universal deck hinges by removing the screw, inserting the eye end, and replacing the screw securely in the universal deck hinges. Raise the top to desired upright position and attach the ends of the rear braces to the fixed 90° deck hinges securely with the quick-release pins.
5. Measure the marked position for the front hold-down straps by first adjusting the straps to a length that will attach to the boat rails at approximately 45° to 60° angles. Mark the position of the eye straps on the rails of the boat, measuring to make sure they are exactly opposite on each side of the boat. Use a drill with a 9/64" bit to drill the pilot holes for the eye straps. Secure the eye straps with the No. 10 x 1" sheet metal screws provided.
6. Attach the snap hooks on the ends of the front hold-down straps to the eye straps and adjust the hold-down straps as needed so that they are as tight as possible.
7. For square tube bimini tops without zippered sleeves, the desired crown can be achieved by tightening the adjuster straps after the bimini top is installed and hold-down straps are secure. The adjuster straps must be properly installed to be effective (see Figure 1).



Eye Strap



Universal  
Deck Hinge



Fixed 90°  
Deck Hinge



Scan QR Code to watch  
our online video on  
mounting your top  
to the boat.

**IMPORTANT NOTE TO TOP INSTALLER/USER:** Be sure all set screws, fittings and pre-installed hardware are tight. Vibration can cause screws to loosen over time. Check all fittings frequently and tighten as necessary.

**CAUTION:** Always fold down and secure bimini top in the stored position when trailering your boat and when not in use. Never allow water or snow to pool on the bimini top.

When properly installed, you can safely deploy and use your bimini top with a maximum operating speed of 35 MPH.

For your convenience, assembly & installation videos are available on our website.





## Square Tube (1") Pontoon Bimini Top - Buggy Style Supplemental Instructions

Follow the instructions for the Square Tube (1") Pontoon Bimini Tops according to your style (w/o light cut-out and w/o zippered sleeves or w/ light cut-out w/ zippered sleeves) for assembly of your frame. The assembly/installation will be the same with the exception of the canvas tails as shown.

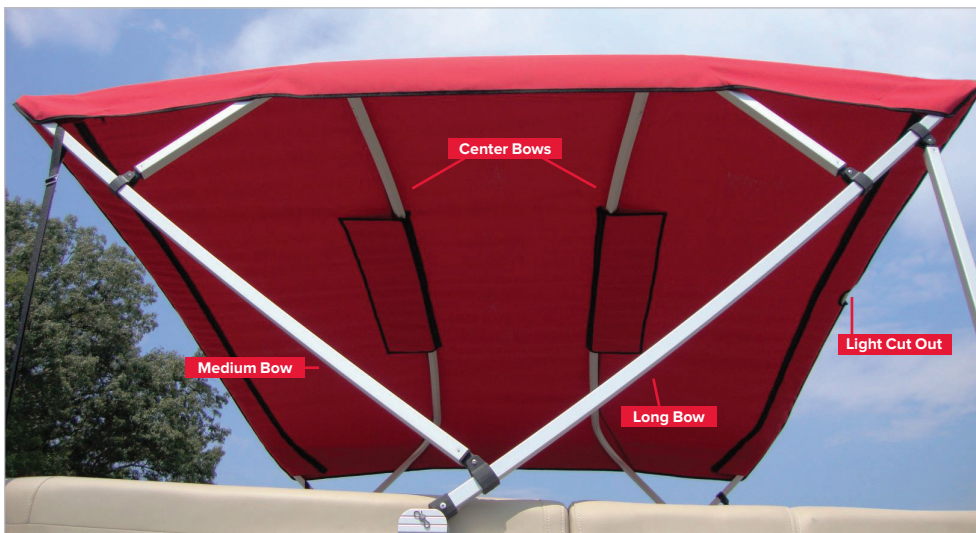
### Additional Instructions for Buggy-Style Pontoon Top with Tails:

1. To fit tails properly, pull the tails straight down and mark the snap locations on the rails using a black marker.
2. Drill 1/8" hole where each snap location is marked on the rail. Install the supplied screw studs into each hole. Repeat for all snaps.
3. Snap tails to the rails.

NOTE: The additional hardware (6 screw studs) is included in the canvas package.



## Replacement Canvas for Square Tube Pontoon Frames Installation Instructions



Zippers make it easy to remove canvas for cleaning and installing on your existing frame.



1. Unzip the canvas and place it around the long bow at the light cut-out.
2. Begin closing the zipper. Slowly pull more canvas together until the zipper is completely closed around the top of the long bow.
3. Proceed to the medium bow and repeat Step 2.
4. Proceed to the two center bows and repeat Step 2.
5. Center the canvas on the frame.

More Information at [CarverCovers.com](http://CarverCovers.com)  
or call (888) 48-COVER.

Protecting The Things That Move You®

## Carver Square Brace Kits are Available In:

- 33" Brace Kit (1" Square Tube Aluminum w/ Nylon Fittings for 48"H Pontoon Bimini Tops) - Fixed
- 38" Brace Kit (1" Square Tube Aluminum w/ Nylon Fittings for 54"H Pontoon Bimini Tops) - Fixed
- 48" Brace Kit (1" Square Tube Aluminum w/ Nylon Fittings for Pontoon Bimini Tops) - Fixed

## All 1" Square Tube Brace Kits Contain:

- (2) Braces
- (2) Fixed 90° Deck Hinges
- (2) Fixed Jaw Slides w/ Screw and Bolt
- (2) Quick-Release Pins w/ Lanyard
- (4) #10 x 1" Stainless Steel Screws (for mounting the deck hinges)
- (2) 3/16" Rivets (required only when cutting down braces)



The height of fixed aluminum braces may be adjusted (if desired) by removing and replacing one eye end on each brace. To remove the eye ends, use a 3/16" drill bit to drill out the rivets. Carefully measure and cut down the tubing to the desired length using a hacksaw. To replace the eye ends, use a 3/16" drill bit to carefully drill the hole for the replacement rivets. Be sure each eye end is set in the correct position before drilling for the rivet. Use a rivet gun to set the rivets in place (rivet gun not included).

All Carver square tube tops will have pre-installed fixed jaw slides for use with a rear brace kit (10' tops will have both front and rear) making the attachment quick and easy.

If your bimini top does not have pre-installed jaw slides for a brace kit, then carefully measure the exact location for the fixed jaw slide on each side of the main (long) bow and mark with a black marker. Be sure the measurement is identical on port and starboard side. Fasten each jaw slide around the main bow at the marked locations by tightening the screw securely. Insert the braces into the jaw slides by inserting the eye ends and securing tightly with the bolts provided. The typical location to attach the braces to the main (long) bow is 2 inches beneath the hold-down straps (follow the instructions above to remove the eye ends, install the jaw slides – then re-install the eye ends).

To attach the braces, the bimini top must be deployed (in its upright position). Insert the braces into the jaw slides by inserting the eye ends and securing tightly with the bolts provided. Once the braces are attached to the main bow, determine the mounting locations for the fixed 90° deck hinges. The typical mounting point will create a 45° to 60° angle with the main (long) bow when the braces are mounted to the gunwale. To mount the deck hinges, refer to Steps 2 and 3 in the **Bimini Top Installation Instructions** on Page 8.





# BIMINI TOP ACCESSORIES



### Bimini Top Storage Boots

Let it sit in the sun. Our Square Tube Pontoon Bimini Tops fold together and out of the way in the protective storage boot. Available w/ or w/o light cut-out in material to match your top.

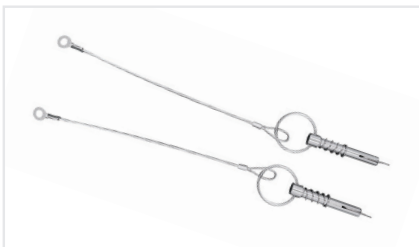
### Bimini Top Square Tube Brace Kits

Designed to hold your top up and out of the way when top is folded and not in use. Each package includes two 1" square aluminum tubes which can be cut to desired lengths, 2 jaw slides, 2 fixed 90° deck hinges, 2 quick-release pins and all screws necessary for mounting. One pair to a package. Available in 3 sizes.



### Bimini Top Replacement Hold-Down Straps

Constructed of 1" black polypropylene webbing with stainless steel snap hook and stainless steel adjustable buckle. Available in 3 lengths. Packed in sets of two or four.



### Quick-Release Pins with Lanyard and Eye

Attach and remove your bimini top and/or brace kit from the deck hinges fast and easy with quick-release pins. Quick-release pins are secured to the deck hinge with the existing deck mounting screws, ensuring you don't lose them in the water. If not already pre-drilled for quick-release pins, the existing pivot hole must be drilled out using a 1/4" drill bit (not included) to secure the quick-release pin to the deck hinge.



### Privacy Curtain

Great for use as a changing room or portable potty enclosure. Attaches to bimini top with 1" polypropylene straps with quick-release buckles. Height is adjustable up to 60".

**Need more help?** See video demonstrations of assembly and installation procedures on our website, [CarverCovers.com](http://CarverCovers.com)!

Carver by Covercraft produces quality Boat Covers, Personal Watercraft Covers and Bimini Tops. We take great pride in the craftsmanship and attention to detail that goes into all of our products.

For more information and information about additional products, call us at 864-457-5820 or visit [CarverCovers.com](http://CarverCovers.com).





# Bimini Top Care Instructions & Limited Warranty Information

## CARING FOR YOUR BIMINI TOP CANVAS:

Clean bimini top canvas regularly to remove salt, pollen and environmental pollutants that could support the growth of mildew. To keep your canvas looking its best, regularly brush off any loose dirt or soil with a soft brush and rinse with lukewarm water (100° F maximum). To clean, a solution of lukewarm water and mild, **non-detergent** soap (such as Dreft, Ivory, Lux or Woolite) may be used. Rinse thoroughly and allow to air dry. The use of detergents is not recommended as it may diminish the water repellent finish on certain fabrics. Never machine wash, dry clean or iron the canvas. To spot clean stubborn soil or stains, a solution of 1/4 cup mild natural soap and 1 cup of bleach per gallon of lukewarm water may be used. Mist the soiled area and clean vigorously with a sponge, soft brush or clean towel. Rinse thoroughly and allow to air dry.

If water repellency is diminished, we recommend re-treating the canvas with 303® Fabric Guard. Allow canvas to dry thoroughly before folding for storage. Always fold down and secure bimini top in the stored position inside the storage boot when trailering your boat and/or when the top is not in use. Never allow water or snow to “pool” on the bimini top.

## CARING FOR YOUR BIMINI TOP FRAME:

To maintain the appearance of your bimini top frame, simply wipe regularly with a soft, non-abrasive cloth and warm water to remove environmental pollutants, finger prints and other outdoor soils. If desired, mild, non-detergent soap may be used. Rinse thoroughly and wipe dry.



Scan QR Code for more information on bimini top care and maintenance.

## Carver Bimini Top Limited Warranty

Carver guarantees that the materials and craftsmanship of their products are free from defects upon manufacturing.

The length of the warranty depends on the specific product line and material type and starts from the original date of purchase for the original owner (replacements or pro-rated replacements do not extend the warranty). The length of the warranty is determined by the type of material ordered. Frame warranty is separate from the material warranty.

The warranty does not cover natural events, normal wear and tear, weather damage, stains from pollution or water, cuts from sharp objects, neglect, accidents, or misuse. Tree sap, improper chemicals, cleaning agents, gasoline, oils, and other liquids not recommended for cleaning are also not covered. Any damage caused by animals such as rodents, birds, pets or insects is not covered in the warranty.

Proper installation, usage, and maintenance of the boat cover, PWC cover, or Bimini Top are necessary for warranty coverage.

Carver fabrics are water resistant, not waterproof; they must be breathable to allow condensation, heat, and moisture to evaporate from under the cover. Damage from pooled water will not be included in these warranties.

Please visit [www.CarverCovers.com/About-Carver/Product-Warranty-Information/](http://www.CarverCovers.com/About-Carver/Product-Warranty-Information/) for detailed limited warranty information or scan QR code below.



Call before returning product under warranty to receive a Return Merchandise Authorization Number (RMA#) at 864-457-5820, then send warranty claims to:

### Mailing/Shipping Address

Carver by Covercraft Industries, LLC  
212 N. Lyles Ave., Landrum, SC 29356

Please enclose a note describing the defect and be sure to include your full name, address and phone number inside the package.

**\*If you need return assistance with your order that is less than 30 days old - please contact the original place of purchase for return authorization.**